



Wurstwaren-

Katalog





**UNSERE
WURSTWAREN IM
FREIEN VERKAUF**



ref: 4305

Mettwurst 2x

ref: 4301

BESTSELLER**Mettwurst 4x**

ref: 4308

Mettwurst 6x

ref: 1976

Mettwurst 10x

ref: 7764

**Cocktail Mettwurst
15x**

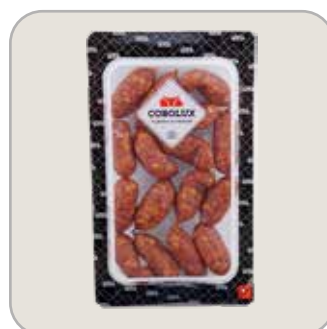
+/- 390 gr



ref: 784

Mettwurst Collier

ref: 7232

Bierknacker 4x

ref: 7667

Mettwurst Apéro



ref: 4316
Lyoner couronne
1/1
+/- 650gr



ref: 4307
BESTSELLER
Lyonercouronne
1/2
+/- 310gr



ref: 7785
Wiener 2x



ref: 4306
BESTSELLER
Wiener 4x



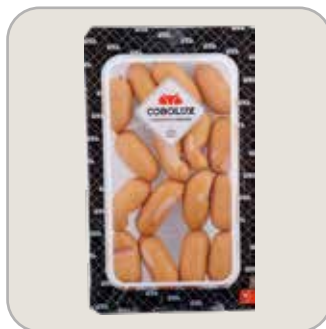
ref: 1789
Wiener 10x



ref: 7768
Wiener volaille x4



ref: 7763
Wiener cocktail
15x



ref: 7666
Wiener Apéro





ref: 7925

Luxgrillwurst x2

ref: 4311

BESTSELLER**Luxgrillwurst x4**

ref: 1791

Luxgrillwurst x6

+/- 390 gr



ref: 1793

**Luxgrillwurst
x10**

+/- 390 gr



ref: 7665

Grillwurst Appéro

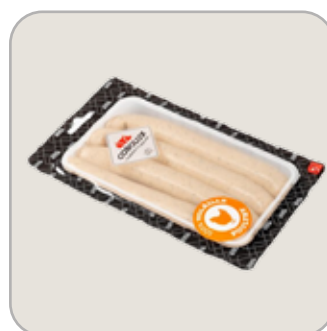
300 gr



ref: 5743

NEU**Grillwurst pur
veau x4**

ref: 7787

**Luxgrillwurst
fromage 4x**

ref: 7450

**Luxgrillwurst
volaille 4x**



ref: 4304

Saucisse Luxembourgeoise

500 gr

-10% de sel



ref: 7789

BESTSELLER

Saucisse Luxembourgeoise

300 gr

-10% de sel



ref: 8017

Fuseau Luxem- bourgeois petit



ref: 8031

Fuseau luxem- bourgeois grand



ref: 4309

BESTSELLER

Salami Luxem- bourgeois tranches 10x

-10% de sel



ref: 7804

Salami Luxem- bourgeois Poivre tranches 10x



ref: 7534

Salami Luxem- bourgeois pur bœuf tranches 10x



ref: 7749

BESTSELLER

Jambon cru fumé 5 tranches

+/- 100 gr





ref: 747

Lard maigre

300 gr



ref: 1711

Lardons fumés

200 gr



ref: 745

Lard gras fumé

+/- 260 gr



ref: 750

Demi bande lard maigre fumé

ref: 7761

Demi Judd fumé

ref: 1704

Lard maigre fumé s.couennes 10 tranches

+/- 155 gr



ref: 4318

Pâté campagne

+/- 270 gr



ref: 7760

Pâté campagne au poivre

+/- 270 gr





ref: 4300

BESTSELLER

**Jambon cuit
Mosel 5 tranches**

+/- 160 gr



ref: 7751

**Jambon Barbecue
5 tranches**

+/- 160 gr



ref: 7108

NEU

**Jambon Mosel 3
tranches**



ref: 7750

**Epaule cuite 5
tranches**



ref: 7352

NEU

**Noix de Jambon
4 tranches**



ref: 7754

**Kasseler 12
tranches**



ref: 4321

**Poitrine de dinde
fumé 12 tranches**

+/- 210 gr



ref: 7755

**Poitrine de
dinde paprika 12
tranches**

+/- 210 gr





ref: 4315

Deck Lyoner tranches

+/- 200 gr



ref: 4303

Saucisse poivre vert 12 tranches

+/- 210 gr



ref: 7790

Pain de viande tranches 6

+/- 150gr



ref: 4313

Schinkenwurst tranches

+/- 210gr



ref: 7752

Pain de jambon tranches 6

+/- 150gr



ref: 7231

NEU

Saucisse Luxembourgeoise

300 gr

Ss gaz



ref: 4319

Saindoux



ref: 0958

Weisswurst

400gr





ref: 7757
Zwiebelmettwurst
250 gr



ref: 7756
Leberwurst fine
250 gr



ref: 772
Kuddelfleck bol
300 gr



ref: 4310
Schinkenwurst
400 gr



ref: 4312
Gelée paysanne bol
300 gr



ref: 4302
Gelée porcelet bol
300 gr



ref: 7758
Schmierwurst
250 gr



ZUM GRILLEN



ref: 7787

**Luxgrillwurst
fromage 4x**



ref: 7452

Wienerliess 4x



ref: 7797

Big 6 BBQ



ref: 7230

**Grillbockwurscht
3x**



ref: 7787

Plateau mini grill



ref: 6989

**Wiener speck kase
3x**



ref: 7926

Wiener fromage 4x





LOSE

WURSTWAREN



ref: 895

Lyoner vrac

ref: 0501

Saucisse luxembourgeoise

500 g



ref: 0502

Saucisse luxembourgeoise

250 g



ref: 0504

Salamis luxembourgeoise

2,2 kg



ref: 0505

Salamis luxembourgeoise

3,5 kg



ref: 0507

Mettwurst x 25

ref: 0510

Bierknacker

ref: 0511

**Saucisse pays.
Couronne a 3**



ref: 0514

Mettwurst cocktail

2 kg



ref: 0529

Mini-mettwurst

ref: 0784

Mettwurst collier ls

ref: 0607

**Collet pc salé fumé
p. Cuire - os**

ref: 0606

**Collet pc fumé - os
sec**

ref: 0610

Lard gras fumé

ref: 0612

Kasseler fumé - os

ref: 0632

Épaule pc salé - os



ref: 0706

Kasseler cuit - os

ref: 0707

Jarret pc cuit ar.

ref: 0639

Jarret pc salé

ref: 0650

Collet pc sale - os

ref: 0661

**Jambon fumé
impérial - os**

ref: 0703

**Jambon cuit
paysan**

ref: 0704

Épaule cuite

ref: 0705

Kasseler cuit + os



ref: 0708

Pied porc cuit

ref:

0714

**Jambon cuit
Moselan**

ref: 0715

**Jambon cuit bar-
becue**

ref:

0605

Noix pc fumée

ref: 0830

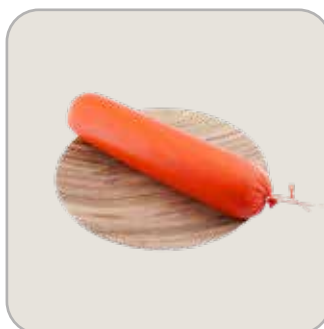
Grillbockwurst

ref:

0835

**Pain viande
fromage**

ref: 0839

Pain viande

ref:

0852

Schinkenwurst

900 gr





ref: 0810

**Saucisse poivre
vert**

ref: 0984

**Saucisse poivre
vert ½**

ref: 0811

**Saucisse oeuf/
paprika**

ref: 0986

**Saucisse oeuf/
paprika ½**

ref: 0807

**Saucisse
champignons**

ref: 0981

**Saucisse
champignons ½**

ref: 0823

Deck lyoner

ref: 0995

Deck lyoner ½

ref: 0818

**Schinkenwurst
simple**

ref: 0992

**Schinkenwurst
simple ½**

ref: 0808

Saucisse olives

ref: 0982

Saucisse olives ½



ref: 0861

Zwiebelmettwurst

250 g



ref: 0867

Leberwurst fine

250 g



ref: 0886

**Gelée paysanne
bol**

300 g



ref: 0851

Schinkenwurst

400 g



ref: 0887

Gelée porcelet bol

ref: 0853

Jagdwurst

400 g



ref: 0860

Schmierwurst

250 g



ref: 0764

**Paté campagne
terrine ls**



ref: 5414

Gelée de jambon sv

ref: 0870

**Leberwurst
couronne**

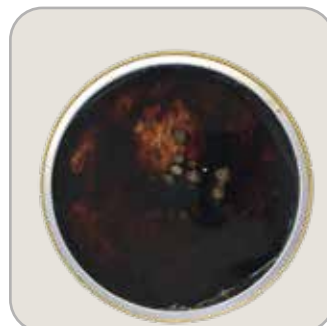
ref: 0885

**Gelée paysanne
bloc**

ref: 0876

Paté campagne

ref: 0606

Collet de porc fumé

ref: 0879

**Paté campagne
au poivre**

ref: 0888

**Museau
charcuterie**



ref: 6251
**Luxgrillwurst
curry x25**



ref: 0899
Boudin noir x16



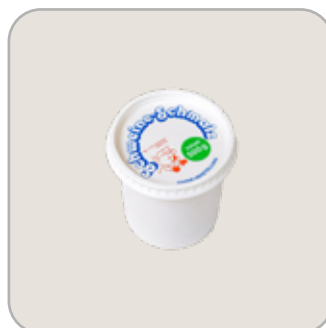
ref: 0897
Grillwurst x25



ref: 6249
**Luxgrillwurst
fromage x25**



ref: 0996
**Poitrine pc fumé
1/2**



ref: 0902
Saindoux
500 g



ref: 0998
Wiener 2 kg x25
2 kg



ref: 1818
Schinkenspeck ls





ref: 5417
**Oeuf en gelée /kg
x2 ls**



ref: 5419
Kuddelfleck pot 1s



ref: 5421
Gelée simple



ref: 8017
Fuseau lux petit



ref: 8031
Fuseau lux grand

