



Catalogue

# Viandes



# NOUVEAUX PRODUITS



ref: 8056

**Emincé bœuf  
Gyros**

300gr



ref: 8274

**Emincé porc Gyros**

300gr



ref: 8723

**Emincé veau Gyros**

300gr



ref: 9046

**Emincé volaille  
Gyros**

300gr



ref: 9054

**Kebapstick volaille**



ref: 9866

**Kebapstick bœuf**



# AGNEAU



ref: 5711

**Côtes Agneau  
marinées x4**

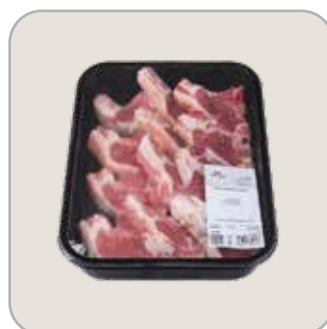


ref: 5712

**Tranches Gigot  
Agneau x2**

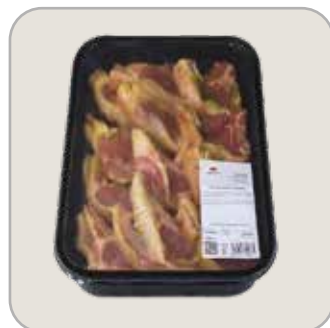
ref: 5708

**Tranches Gigot  
Agneau x1**



ref: 5836

**Côtes Agneau x12**



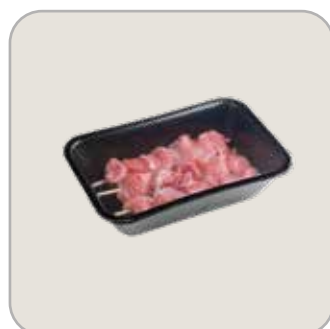
ref: 5837

**Côtes Agneau  
marinées x12**



ref: 5838

**Tranches Gigot  
Agneau x4**



ref: 6256

**Brochettes Agneau  
nature x3**

ref: 6257

**Brochettes Agneau  
marinées x3**



ref: 5777

**Côtes Agneau x4**  
+/- 300 g



# BŒUF



ref: 5663

**Steak Boeuf  
supérieur x2**



ref: 5660

**Steak Filet Boeuf  
x2**



ref: 5811

**Steak Boeuf  
supérieur x8**



ref: 5767

**Rumsteak Boeuf x2**

ref: 5661

**Rumsteak Boeuf x1**



ref: 5810

**Steak Rumsteak  
x8**



ref: 5674

**Roulades Boeuf x2**



ref: 5673

**Rôti épaule de  
Boeuf**





ref: 5142

**Rognon Boeuf**

ref: 5769

**Ragoût boeuf**

+/- 500 g



ref: 5671

**Plate Côte Boeuf  
A/Os**

ref: 5677

**Queue de boeuf x3**

+/- 680 g



ref: 5768

**Jarret Boeuf x3**

ref: 5664

**Jarret Boeuf x1**

ref: 5139

**Foie Boeuf x3**

ref: 5824

**Fondue Rumsteak**

+/- 300 g





ref: 5808

**Steak Faux-Filet  
x8**

ref: 5766

**Steak Faux-Filet  
x2**

ref: 5659

**Steak Faux-filet x1**

ref: 5770

**Steak Entrecôte x2**

ref: 5678

**Steak Entrecôte x1**

ref: 5670

**Emincé de Boeuf  
+/- 300 g**

ref: 5823

**Brochettes Boeuf  
x6**

ref: 5771

**Brochettes Boeuf  
x3**

ref: 5772

**Brochettes Boeuf  
marinées x3**

ref: 5144

**Langue Boeuf**

ref: 7652

**Tournedos de  
Bœuf x2**



ref: 7653

**Steaks bœuf au  
poivre x2**



ref: 7655

**Steaks bœuf x2**



ref: 7653

**Steaks bœuf  
maître d'hôtel x2**



ref: 7656

**Paleron de bœuf**



ref: 7657

**Basse cote de bœuf**



# DINDE



ref: 5753

**Escalopes Dinde  
panées x2**

+/- 340 g



ref: 5755

**Escalopes Dinde  
x2**



ref: 5754

**Brochette Dinde  
marinées x3**



ref: 5752

**Brochette Dinde x3**





# PORC



ref: 5642

**Cordon bleu pressé  
Porc x2**



ref: 5652

**Cordon bleu  
Escalope Porc x2**



ref: 5760

**Collet salé Porc  
(Gesolpertes)**

+/- 520 g



ref: 5635

**Escalope Porc  
pané x2**



ref: 5791

**Cotes Porc Collet  
x8**



ref: 5638

**Cotes Porc Collet  
x2**





ref: 5790

**Cotes Porc  
Premières x8**



ref: 5643

**Cottis Porc Ribs**  
+/- 510 g



ref: 5645

**Emincé Porc**  
+/- 300 g



ref: 5634

**Epaulé Porc**  
400 g



ref: 5632

**Escalope Porc x2**



ref: 5788

**Escalope Porc x8**



ref: 5644

**Filet Migon Porc x1**



ref: 5796

**Filet Migon Porc x4**





ref: 5125

**Médailles Porc**

+/- 200 g



ref: 5265

**Jarret Porc cru  
avant x3**

ref: 5649

**Queues Porc  
fraîches**

+/- 870 g



ref: 5794

**Ragoût Porc**

1 kg



ref: 5640

**Ragoût Porc**

+/- 400 g



ref: 5263

**Rognon Porc**

+/- 200 g



ref: 5793

**Rôti Filet Porc**

1,2 kg



ref: 5657

**Brochettes Porc x3**

ref: 6255

**Brochettes Porc  
marinées x3**



ref: 5805

**Brochettes Porc x6**

ref: 5637

**Cotes Porc  
Premières x2**

ref: 6001

**Cote Porc  
Première x1**

ref: 5791

**Côtes Porc Collet  
A/OS marinées x8**

ref: 5653

**Côtes Porc Collet  
A/OS marinées x2**

ref: 5804

**Côtes Porc S/OS  
marinées x6**

ref: 5656

**Côtes Porc S/OS  
marinées x2**

ref: 5802

**Tranches lard  
marinées x12**

ref: 5654

**Tranches lard  
marinées x4**

ref: 5982

**Spareribs  
marinées**

+/- 500 g



# PORCELET



ref: 5239

**Collet Porcelet A/  
OS**



ref: 5839

**Cotelettes Porcelet  
x12**



ref: 5778

**Cotelettes Porcelet  
x5**

+/- 480 g



ref: 5058

**Epaule Porcelet**



ref: 5718

**Poitrine**



ref: 5065

**Jambon Porcelet**



# VEAU



ref: 5774

**Côte de Veau x2**

ref: 5693

**Côte de Veau x1**



ref: 5830

**Côtes de Veau x8**



ref: 5690

**Escalopes Casi  
Veau x2**



ref: 5831

**Escalopes Casi  
Veau x8**



ref: 5134

**Foie Veau x3**



ref: 5692

**Jarret Veau x2**





ref: 5689

**Rôti Noix Veau**

+/- 810 g



ref: 5696

**Poitrine Veau A/  
OS**



ref: 5138

**Rognon Veau**



ref: 5697

**Ragoût Veau**

+/- 420 g



ref: 5832

**Ragoût Veau**

1 kg



ref: 5691

**Rôti Veau Epaule**





ref: 6258

**Brochettes Veau  
nature x3**

ref: 6259

**Brochettes Veau  
marinées x3**



ref: 5842

**Blanquette Veau  
A/OS**

300g



ref: 5829

**Jarret Veau x5**



ref: 5146

**Langue Veau**





# POULET



ref: 5739

**Pilons Poulet x4**

+/- 435 g



ref: 5745

**Ailes Poulet x5**

+/- 420 g



ref: 5742

**Filet Poulet x2**



ref: 5740

**Cuisses Poulet x2**



ref: 5847

**Pilons Poulet  
marinés x12**

ref: 5739

**Pilons Poulet  
marinés x4/5 pc**



ref: 5843

**Cuisses Poulet  
marinées x6**

ref: 5748

**Cuisses Poulet  
marinées x2**



# SAUCISSES A RÔTIR



ref: 5776

**Saucisses à rôtir /  
Veau x4**



ref: 5756

**Saucisses à rôtir /  
Weinzossis x4**



ref: 5853

**Saucisses à rôtir /  
Weinzossis x20**

+/- 2 kg



ref: 5758

**Boudin Noir x4**

ref: 5629

**Boudin Noir x3**



ref: 5757

**Merguez x4**



ref: 5784

**Merguez x20**

+/- 2 kg



# HACHÉ



ref: 5676

**Filet américain  
nature**

+/- 500 g



ref: 5487

**Filet américain  
épicé**

300 g

ref: 5162

**Filet américain  
épicé**

500 g



ref: 5825

**Hamburger x8**



ref: 5681

**Hamburger x2**



ref: 5797

**Haché mélangé  
épicé FAM**

+/- 1,750 kg



ref: 5647

**Haché mélangé**

+/- 500 g



ref: 5695

**Haché Pur Veau**

+/- 500 g





ref: 7166

**Plateau saucisses Grill**



ref: 7167

**Plateau pierrade / plancha**



ref: 7168

**Plateau fondue mixte / plancha**



ref: 7169

**Plateau mixte grill**



ref: 7170

**Plateau bratwurst grill**



ref: 7171

**Plateau hamburger**



ref: 7172

**Plateau gourmet**



ref: 7173

**Plateau mixte hamburger & boulettes**

